

Direct Acting 2, 3-Port Solenoid Valve Multifit®

For Food Manufacturing Process : FFB/FFG-FP2 Series

For Rechargeable Battery Manufacturing : FFB/FFG-P4 Series



Contributes to safe and secure food manufacturing processes FFB/FFG-FP2 Series



FP2 Series

Lubricant Material Assembly environment

Eliminates contamination concerns from lubricants!

Materials are safe too! The lubricant for flow path and sliding parts uses food-grade (NSF H1).

Furthermore, the flow path uses materials (resin, rubber) compliant with the Food Sanitation Act*.

Body : Stainless steel

Seal : Fluororubber

Materials compliant with the Food Sanitation Act Notification No. 370 of 1959



Operating fluid



Variations

Model No.	Number of ports	Type	Port size (Rc)
FFB	2-port	Single	1/8
			1/4
			3/8
			1/2
FFG	3-port	Single	1/8
			1/4
			3/8

For details on available model numbers and specifications, please refer to the CKD Components Site (<https://www.ckd.co.jp/en>).

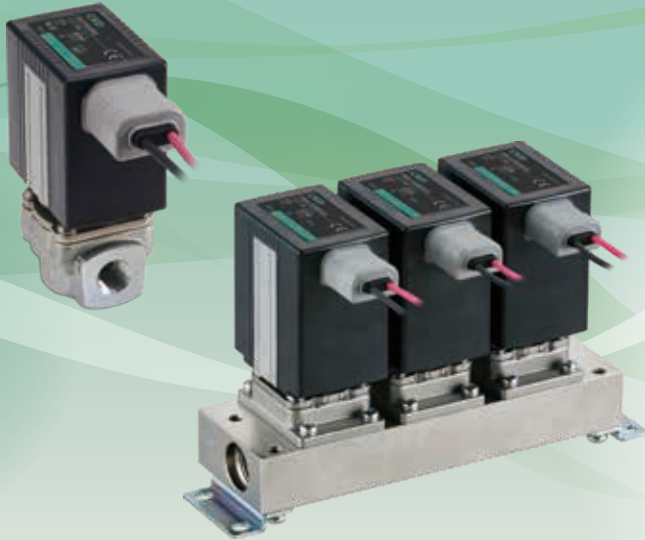


FFB/FFG-FP2 Series



FFB/FFG-FP2/P4 Series

Long-term stable operation in rechargeable battery manufacturing process
FFB/FFG-P4 Series



Make Progress!!

P4 Series



Momentary stops

System maintenance

System failure

CONVENTIONAL

P4 Series

Long life even at dew point ADP-80 °C

Wide lineup compatible with ultra-low dew point atmospheres (including supply air).



Restricts materials of component parts



Restricts copper materials



Restricts zinc materials



Restricts nickel-based materials



Restricts zinc plating



Restricts electrolytic nickel plating

Seal : Fluororubber

Body : Stainless steel

Operating fluid

Compressed air



Dry air

DRY

Inert gas



Low vacuum



Variations

Model No.	Number of ports	Type	Port size (Rc/G/NPT)
FFB	2-port	Single	1/8
			1/4
			3/8
			1/2
FFBM	2-port	Manifold	1/8
			1/4
FFG	3-port	Single	1/8
			1/4
			3/8
FFGM	3-port	Manifold	1/4

For details on available model numbers and specifications, please refer to the CKD Components Site (<https://www.ckd.co.jp/en>).

FFB/FFG-P4 Series



Click!

The goods and/or their replicas, the technology and/or software found in this catalog are subject to complementary export regulations by Foreign Exchange and Foreign Trade Law of Japan. The law requires a license from Ministry of Economy, Trade and Industry to export them.

CKD Corporation

[Website]

<https://www.ckd.co.jp/en/>

Head Office · Plant
Tokyo Office

Osaka Office

2-250, Ouji, Komaki, Aichi 485-8551
4F, Bunkahousou Media Plus, 1-31-1, Hamamatsu-cho, Minato-ku, Tokyo 105-0013
6F, PMO EX Shin-Osaka, 4-2-10 Miyahara, Yodogawa-ku, Osaka 532-0003

TEL(0568)77-1111 FAX(0568)77-1123
TEL(03)5402-3620 FAX(03)5402-0120

TEL(06)6396-9630 FAX(06)6396-9631